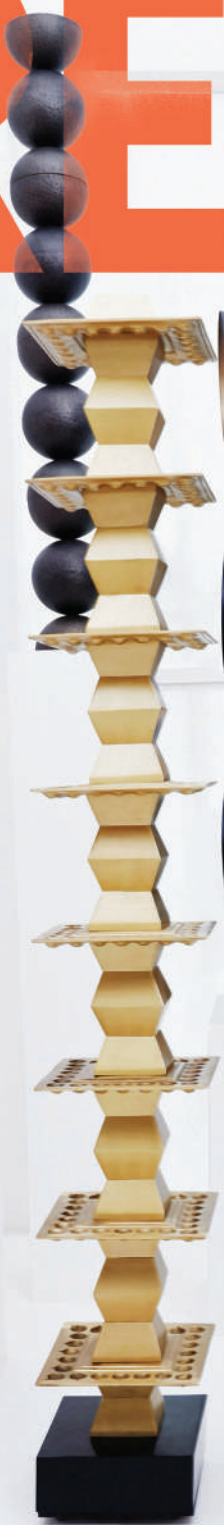


TRENDS

VOLUME 11 NO 2 ₹ 250



From Inspiration to INFINITY

A close look at how **Ashiesh Shah** celebrates the triumph of Indian crafts in his own inimitable way

Also Featured
Some of the best designed restaurants across the country

REDEFINING PERCEPTIONS

SLA bestows the interiors of this beauty clinic in Chennai with a distinctive identity, completing the project within a tight timeline of five months

Text AVNI RAUT Images YASH R JAIN



Setting the tone for the interiors is a varied material palette comprising PU finish fluted panels, customised marble flooring, fluted glass doors, patterned tiles, and more, with customised art and hues of soft pink, salmon, green, black, and deep blue perking up the visual appeal.



“Curves are an integral part of the design and can be seen in the different storage pieces here. The idea was to keep it distinctive, vibrant and luxe.”

—Sonali Jain and Sidharth Lodha, Principal Designer and Principal Architect, SLA





“The south wall, which is also the facade of the building, had eight feet-tall openings with fixed glass overlooking the lush green surroundings. We replicated that on the east wall as well, where all the treatment rooms are aligned, to bring in natural light.”

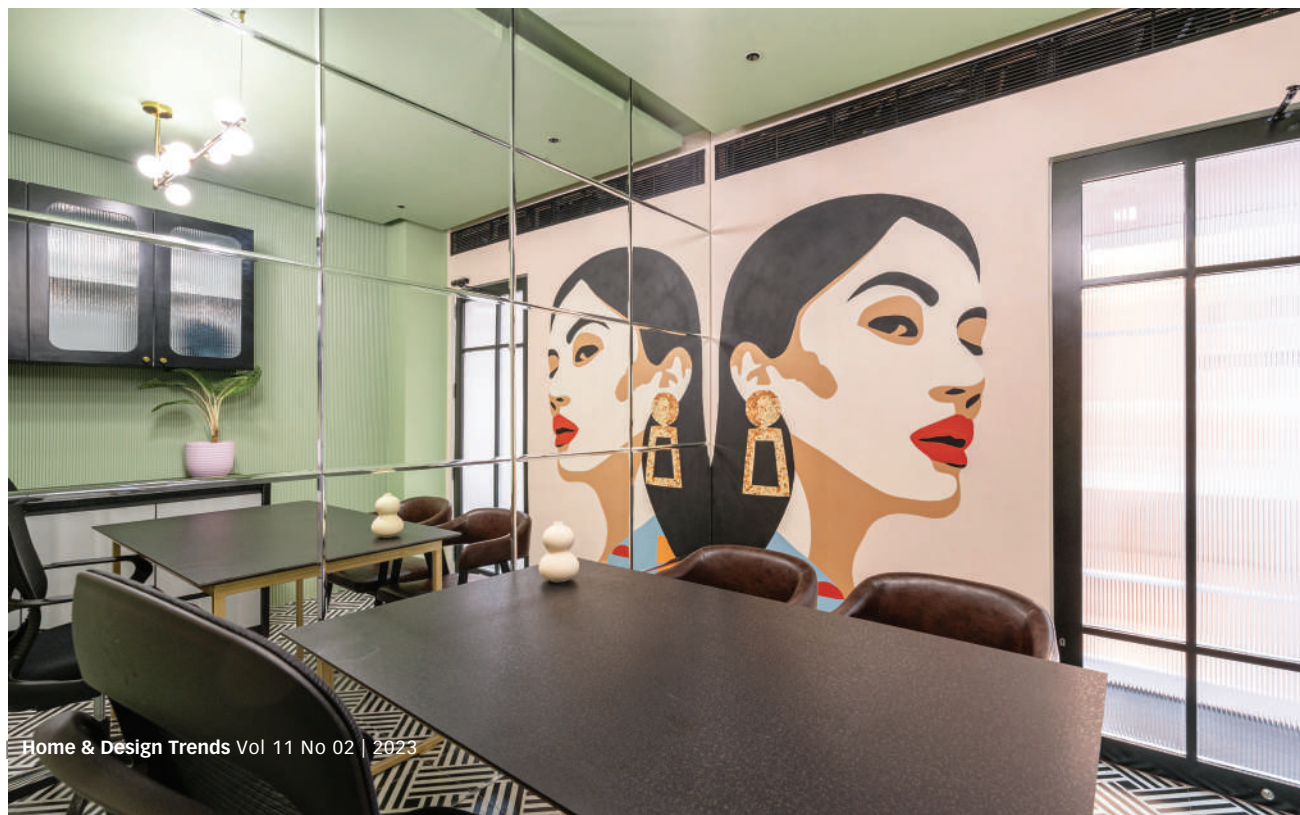
—Sonali Jain and Sidharth Lodha, Principal Designer and Principal Architect, SLA



Designed by Sonali and Sidharth Lodha of their eponymous firm SLA, Nouveau beauty house is a skincare clinic located in Adyar, Chennai. Spanning 2,000sqft, the space melds varying palettes, tied together by one overarching theme. “The idea was to design a space that celebrates women,” say Sonali and Sidharth. “There are many ways to describe women - passionate, dramatic, expressive, fearless, limitless - and that is what we wanted the space to reflect.”

Treating the interior walls as blank canvasses, the surfaces are graced with murals featuring women with different expressions and moods, while various elements within reflect curving silhouettes, softening the tonality of the interiors. “Every space has a different color scheme and artwork complementing the space. The idea was to design a contemporary and luxurious clinic with a rich material palette,” says the duo.

The reception and waiting lounge lead to the MD’s cabin and treatment room which are interconnected, while to the left is a central passage with rooms on either side. These rooms comprise two consultation rooms, three treatment rooms, the accounts and service room, a pantry, changing room, and the toilets. The architects configured the internal layout based on the spatial and functional requirements and created larger openings on the east façade to maximise natural light and views of the outdoors. “We broke open larger openings in line with the space and also added a metal extension to overlook the landscape,” say Sonali and Sidharth. **H&DT**



collection LES FORÊTS
pattern TINTO

ARTE®

wallcoverings for the ultimate in refinement

Softlite Impex Pvt Ltd

Unit No. 204, Maplle-Morya Classic, Plot No. B-18, Off New Link Road, Near Infinity Mall, Andheri (West), Mumbai - 400053.

Email: contact@softliteimpex.com | Tel: 022 61517052

arte-international.com